

# Stock Screener and Backtest

May 9, 2023

## Moving Average Breakout

Short-Term

Mid-Term

Mid/Long-Term

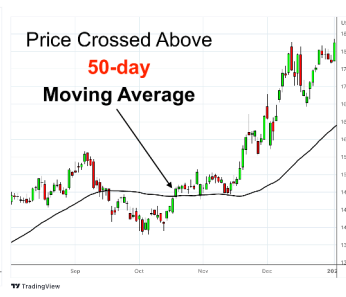
Long-Term

20-day

50-day

100-day

200-day



**Stocks**

Analyzed

248

**Strategies**

Analyzed

992

**Trades**

Analyzed

11.225

Average Top 3  
**Positive Trades**

100,0%

Average Top 3  
**Average Return**

154,2%

Average Top 3  
**Total Return**

1232,2%

# Table of contents

## 1. How It Works

## 2. General: Rankings

## 3. 20-day Moving Average

*3.1 20-day Moving Average: Rankings*

*3.2 20-day Moving Average: All Stocks*

## 4. 50-day Moving Average

*4.1 50-day Moving Average: Rankings*

*4.2 50-day Moving Average: All Stocks*

## 5. 100-day Moving Average

*5.1 100-day Moving Average: Rankings*

*5.2 100-day Moving Average: All Stocks*

## 6. 200-day Moving Average

*6.1 200-day Moving Average: Rankings*

*6.2 200-day Moving Average: All Stocks*

## 7. Glossary

## 8. Disclaimer

# 1. How It Works

This section explains why this report can be used as a Stock Screener and Backtest.

## Stock Screener

This report acts as a "**Stock Screener**" because it lists the stocks that in the last trading session showed at least 1 of the following 4 trading signals / chart patterns which identify the potential start of a **new positive trend** at short, medium or long term:

### Short-Term Trend

Price crossed above 20-day Moving Average

### Mid-Term Trend

Price crossed above 50-day Moving Average

### Mid / Long-Term Trend

Price crossed above 100-day Moving Average

### Long-Term Trend

Price crossed above 200-day Moving Average



## Backtest

The "**Backtest**" function of this report refers to a **test** carried out on the stocks identified by the *stock screener* to find out how they have performed, in a given period, every time that in the *last 4 years* they have shown the same trading signal / chart pattern. The **basic principle of the backtest** is that every time the trading signal / chart pattern has appeared in the past, it is as if a buy position on the stocks was opened and then closed in 4 different ways: after 20 days, after 60 days, after 120 days or using a strategy that includes a stop loss and a take profit. Backtests do not consider overlapping trades. See "Glossary" for more information.

The image below shows an example of how the backtest results are shown for each stocks analyzed assuming that the stock screener shows that Apple (AAPL), Nvidia (NVDA) and Amazon (AMZN) are the only 3 stocks that in the last trading session saw their price crossed above the 20-day moving average and it is assumed that the backtest places as a condition for closing the trade that 20 days have elapsed since the opening. The data in the table is not real but just an example.

ENTRY Strategy		Price Crossed Above 20-Day Moving Average			
EXIT Strategy		After 20-days (1-Month)			
Ticker	Company	No.	Positive Trades	Average Return	Total Return
AAPL	Apple Inc	25	85%	4,0%	266,6%
NVDA	Nvidia Corp	27	82%	3,5%	253,2%
AMZN	Amazon Inc	23	79%	3,0%	197,4%

### ENTRY Strategy

It refers to the single trading signal / chart pattern used to simulate the opening of each single trades: Price crossed above 20, 50, 100 or 200-day moving average.

### EXIT Strategy

It refers to the strategy used to simulate the exit / closing of each single trades: after 20, 60, 120 days or using a strategy with a stop loss of 10% and a take profit of 20%.

### No.

It refers to how many trades have been made, i.e. how many times the single trading signal / chart pattern has appeared in the last 4 years.

### Positive Trades

It refers to how many trades have closed positively. In the example, Apple Inc (AAPL) stock price has crossed above the 20-day moving average 25 times and in 85% of cases the price after 20 days was higher than the initial price.

### Average Return

It refers to the average return of a trades. In the example in each of the 25 times Apple Inc (AAPL) crossed above the 20-day moving average it gained an average of 4% over the next 20 days.

### Total Return

It refers to how much an initial portfolio of \$10,000 invested in each individual trades would earn in total. In the example, if you had started with a capital of \$10,000 and invested every time Apple crossed above the 20-day moving average and closed the position 20 days later, you would have gained 266,6% (gross commissions).

## 2. General: Rankings

Within this report you will find 4 distinct sections that show the results of the backtests, with the relative rankings, for each of the 4 "ENTRY Strategies": Price crossed above 20-day, 50-day, 100-day and 200-day moving average.

In this section, however, you will find **3 rankings** that show the results of the backtests of **all 4 "ENTRY Strategies"** combined together in order to determine the *best strategies* present throughout the report in terms of percentage of positive trades, average return per trade and total return. Backtests do not consider overlapping trades. See "Glossary" for more information.

### Top 10 Strategies by Positive Trades

[Click Here To Unlock](#)

Ticker	Company	ENTRY Strategy	EXIT Strategy	No.	Positive Trades	Average Return	Total Return
???	?????	Price crossed above 200 MA	SL: -10%   TP: +20%	3	100,0%	20,8%	76,3%
???	?????	Price crossed above 200 MA	After 120-days	3	100,0%	20,0%	64,9%
???	?????	Price crossed above 200 MA	After 120-days	4	100,0%	15,8%	78,6%
???	?????	Price crossed above 200 MA	After 60-days	3	100,0%	18,6%	65,8%
???	?????	Price crossed above 200 MA	After 20-days	5	100,0%	3,9%	20,8%
???	?????	Price crossed above 100 MA	After 120-days	6	100,0%	33,2%	423,3%
???	?????	Price crossed above 100 MA	After 60-days	8	100,0%	12,2%	143,1%
???	?????	Price crossed above 20 MA	SL: -10%   TP: +20%	5	100,0%	21,4%	163,5%
???	?????	Price crossed above 200 MA	After 20-days	9	88,9%	8,7%	101,2%
???	?????	Price crossed above 100 MA	SL: -10%   TP: +20%	9	88,9%	17,9%	321,9%

### Top 10 Strategies by Average Return

[Click Here To Unlock](#)

Ticker	Company	ENTRY Strategy	EXIT Strategy	No.	Positive Trades	Average Return	Total Return
???	?????	Price crossed above 20 MA	After 120-days	8	25,0%	214,7%	1010,7%
???	?????	Price crossed above 20 MA	After 120-days	4	50,0%	139,0%	763,6%
???	?????	Price crossed above 100 MA	After 120-days	5	80,0%	108,9%	306,0%
???	?????	Price crossed above 50 MA	After 120-days	5	20,0%	108,4%	383,8%
???	?????	Price crossed above 50 MA	After 120-days	8	25,0%	68,9%	205,9%
???	?????	Price crossed above 20 MA	After 120-days	7	85,7%	46,5%	926,1%
???	?????	Price crossed above 20 MA	After 120-days	8	75,0%	43,0%	568,0%
???	?????	Price crossed above 50 MA	After 60-days	12	33,3%	40,5%	320,4%
???	?????	Price crossed above 100 MA	After 120-days	5	80,0%	40,3%	352,3%
???	?????	Price crossed above 50 MA	After 60-days	7	42,9%	38,9%	236,2%

### Top 10 Strategies by Total Return

[Click Here To Unlock](#)

Ticker	Company	ENTRY Strategy	EXIT Strategy	No.	Positive Trades	Average Return	Total Return
???	?????	Price crossed above 20 MA	After 60-days	13	76,9%	32,2%	1759,7%
???	?????	Price crossed above 20 MA	After 120-days	8	25,0%	214,7%	1010,7%
???	?????	Price crossed above 20 MA	After 120-days	7	85,7%	46,5%	926,1%
???	?????	Price crossed above 20 MA	After 60-days	14	71,4%	24,1%	789,5%
???	?????	Price crossed above 20 MA	After 120-days	4	50,0%	139,0%	763,6%
???	?????	Price crossed above 20 MA	After 120-days	8	75,0%	43,0%	568,0%
???	?????	Price crossed above 20 MA	After 20-days	24	62,5%	9,4%	551,3%
???	?????	Price crossed above 20 MA	After 60-days	8	50,0%	35,5%	495,1%
???	?????	Price crossed above 100 MA	After 120-days	6	100,0%	33,2%	423,3%
???	?????	Price crossed above 50 MA	After 120-days	5	20,0%	108,4%	383,8%

# 3. 20-day Moving Average

## Price Crossed Above 20 MA

The average price of the last 20 days is used as an indication of the short-term trend, so when the company's price rises above it, a short-term positive trend may start.

Then, in this section you will find the results of the backtest of all the stocks that in the last trading session have risen above the average price of the last 20 days (20 MA).

For every time this signal has occurred in the last 4 years, an operation is simulated that ends in 4 different ways: after 20 days, after 60 days, after 120 days and using a strategy with a stop loss of -10% and a take profit of +20%. In the next 3 pages there are the results of the backtest.



**Stocks**

Analyzed

95

**Strategies**

Analyzed

380

**Trades**

Analyzed

5.838

## What's in this section

### Rankings

In this subsection there are 3 rankings:

#### Top 10 by Positive Trades:

Shows the 10 strategies with the most positive trades

#### Top 10 by Average Return:

Shows the 10 strategies with the highest average return per trade

#### Top 10 by Total Return:

Shows the 10 strategies with the highest total return assuming a portfolio with a \$10,000 starting capital invested in each trade.

### All Stocks

This subsection shows the results of the backtest for each stocks analyzed.

As previously explained, the results of the backtest are based on the entry strategy which is based on the price that crossed above the 20-day moving average with the following 4 ways to close the trade:

**After 20 days** (1 month)

**After 60 days** (3 months)

**After 120 days** (6 months)

**Stop loss -10% and Take profit +20%**

# 3.1 20-day Moving Average: Rankings

In this section you will find 3 rankings that show the 10 best strategies in terms of positive trades, average return per trade and total return.

In the following section you will find the list of each individual stocks with the results of the backtest for each of the 4 exit strategies: after 20 days, after 60 days, after 120 days and with the use of a stop loss of -10% and a take profit of +20%. Backtests do not consider overlapping trades. See "Glossary" for more information.

## Top 10 Strategies by Positive Trades

<p><b>TOP 10</b> by <b>POSITIVE TRADES</b></p> <p><a href="#">Click Here To Unlock</a></p>	EXIT Strategy	Ticker	Company	No.	Positive Trades	Average Return	Total Return
	SL: -10%   TP: +20%	???	?????	5	100,0%	21,4%	163,5%
	After 120-days	???	?????	8	87,5%	16,2%	219,3%
	After 120-days	???	?????	7	85,7%	46,5%	926,1%
	After 120-days	???	?????	7	85,7%	7,8%	63,1%
	After 120-days	???	?????	7	85,7%	11,0%	93,2%
	After 60-days	???	?????	13	84,6%	5,9%	101,7%
	After 60-days	???	?????	13	84,6%	8,3%	174,8%
	After 120-days	???	?????	5	80,0%	-6,3%	-36,8%
	After 20-days	???	?????	10	80,0%	11,0%	162,0%
SL: -10%   TP: +20%	???	?????	9	77,8%	14,4%	211,4%	

## Top 10 Strategies by Average Return

<p><b>TOP 10</b> by <b>AVERAGE RETURN</b></p> <p><a href="#">Click Here To Unlock</a></p>	EXIT Strategy	Ticker	Company	No.	Positive Trades	Average Return	Total Return
	After 120-days	???	?????	8	25,0%	214,7%	1010,7%
	After 120-days	???	?????	4	50,0%	139,0%	763,6%
	After 120-days	???	?????	7	85,7%	46,5%	926,1%
	After 120-days	???	?????	8	75,0%	43,0%	568,0%
	After 60-days	???	?????	8	50,0%	35,5%	495,1%
	After 120-days	???	?????	7	57,1%	34,3%	186,4%
	After 60-days	???	?????	13	76,9%	32,2%	1759,7%
	After 60-days	???	?????	8	62,5%	31,2%	266,1%
	After 120-days	???	?????	8	62,5%	25,7%	239,3%
After 60-days	???	?????	5	40,0%	24,9%	9,7%	

## Top 10 Strategies by Total Return

<p><b>TOP 10</b> by <b>TOTAL RETURN</b></p> <p><a href="#">Click Here To Unlock</a></p>	EXIT Strategy	Ticker	Company	No.	Positive Trades	Average Return	Total Return
	After 60-days	???	?????	13	76,9%	32,2%	1759,7%
	After 120-days	???	?????	8	25,0%	214,7%	1010,7%
	After 120-days	???	?????	7	85,7%	46,5%	926,1%
	After 60-days	???	?????	14	71,4%	24,1%	789,5%
	After 120-days	???	?????	4	50,0%	139,0%	763,6%
	After 120-days	???	?????	8	75,0%	43,0%	568,0%
	After 20-days	???	?????	24	62,5%	9,4%	551,3%
	After 60-days	???	?????	8	50,0%	35,5%	495,1%
	After 60-days	???	?????	13	46,2%	23,8%	379,2%
After 60-days	???	?????	12	58,3%	24,4%	377,6%	

# 3.2 20-day Moving Average: All Stocks (part 1)

[Click Here To Unlock](#)

EXIT Strategy																		
			After 20-days (1-Month)				After 60-days (3-Months)				After 120-days (6-Months)				Stop loss: -10% Take Profit: +20%			
No.	Ticker	Company	No.	Positive Trades	Average Return	Total Return	No.	Positive Trades	Average Return	Total Return	No.	Positive Trades	Average Return	Total Return	No.	Positive Trades	Average Return	Total Return
1	???	?????	26	73,1%	3,4%	127,0%	13	61,5%	4,8%	66,5%	8	75,0%	9,8%	82,2%	12	50,0%	4,0%	38,6%
2	???	?????	25	72,0%	3,0%	103,7%	13	61,5%	4,9%	68,6%	7	85,7%	11,0%	93,2%	12	50,0%	3,7%	34,0%
3	???	?????	26	69,2%	1,0%	24,8%	13	61,5%	3,3%	45,1%	8	75,0%	5,0%	37,5%	6	66,7%	9,6%	63,3%
4	???	?????	24	66,7%	8,0%	271,2%	13	76,9%	32,2%	1759,7%	8	75,0%	43,0%	568,0%	23	47,8%	4,7%	106,0%
5	???	?????	24	62,5%	3,1%	93,6%	13	46,2%	6,9%	83,3%	8	50,0%	12,3%	81,1%	13	46,2%	5,3%	64,1%
6	???	?????	28	71,4%	2,6%	93,8%	13	84,6%	8,3%	174,8%	8	87,5%	16,2%	219,3%	9	77,8%	14,4%	211,4%
7	???	?????	28	46,4%	1,0%	3,8%	14	50,0%	-0,7%	-44,6%	7	42,9%	-0,5%	-28,3%	15	46,7%	1,9%	-2,0%
8	???	?????	32	53,1%	-0,2%	-21,3%	14	57,1%	2,0%	25,1%	8	62,5%	3,0%	22,8%	10	50,0%	4,4%	37,1%
9	???	?????	29	55,2%	1,0%	-5,0%	13	61,5%	11,2%	113,2%	7	57,1%	10,2%	35,2%	23	34,8%	-0,7%	-37,1%
10	???	?????	26	65,4%	3,4%	127,2%	12	66,7%	1,9%	11,2%	7	71,4%	6,1%	34,9%	7	42,9%	0,2%	-6,3%
11	???	?????	29	44,8%	0,4%	-3,5%	14	50,0%	4,4%	42,2%	7	71,4%	12,2%	92,7%	16	43,8%	1,9%	9,6%
12	???	?????	25	76,0%	4,3%	162,1%	14	64,3%	7,1%	85,8%	8	62,5%	8,0%	76,6%	12	50,0%	5,7%	69,6%
13	???	?????	28	60,7%	3,8%	136,2%	13	53,8%	8,4%	131,6%	8	75,0%	16,4%	183,6%	16	50,0%	4,8%	73,3%
14	???	?????	27	66,7%	5,7%	226,5%	14	71,4%	24,1%	789,5%	8	50,0%	22,1%	87,2%	32	50,0%	5,5%	251,1%
15	???	?????	32	59,4%	2,0%	79,2%	14	50,0%	0,3%	-6,6%	7	42,9%	2,8%	16,9%	7	57,1%	7,4%	52,4%
16	???	?????	4	75,0%	4,5%	18,8%	2	100,0%	17,7%	38,2%	2	100,0%	18,4%	39,6%	2	100,0%	18,8%	40,7%
17	???	?????	27	55,6%	-0,6%	-20,5%	14	64,3%	3,6%	57,3%	8	75,0%	4,2%	34,3%	6	66,7%	7,2%	43,3%
18	???	?????	32	59,4%	0,9%	17,9%	15	46,7%	0,9%	-0,1%	8	50,0%	5,7%	23,5%	10	40,0%	0,7%	-7,6%
19	???	?????	27	51,9%	-0,8%	-29,3%	13	30,8%	-3,6%	-41,2%	8	37,5%	-6,5%	-47,7%	12	16,7%	-7,0%	-62,4%
20	???	?????	29	65,5%	3,0%	117,2%	14	64,3%	7,4%	147,2%	7	71,4%	6,4%	45,4%	10	70,0%	10,0%	136,2%
21	???	?????	24	54,2%	0,9%	-6,5%	12	41,7%	1,0%	-19,3%	7	57,1%	6,8%	-11,5%	23	34,8%	0,0%	-25,6%
22	???	?????	25	52,0%	3,0%	84,2%	13	46,2%	6,5%	93,7%	8	75,0%	8,4%	59,0%	15	46,7%	2,9%	28,5%
23	???	?????	29	62,1%	1,7%	51,3%	13	53,8%	2,3%	16,5%	8	62,5%	5,8%	33,4%	11	45,5%	3,2%	24,3%
24	???	?????	27	48,1%	-0,8%	-39,9%	15	60,0%	1,2%	4,7%	7	57,1%	0,5%	-37,0%	15	40,0%	2,0%	10,7%
25	???	?????	30	53,3%	5,1%	242,8%	13	53,8%	12,4%	187,8%	7	71,4%	18,4%	135,2%	27	40,7%	2,8%	45,7%
26	???	?????	29	72,4%	3,6%	153,2%	14	71,4%	6,3%	121,7%	7	85,7%	7,8%	63,1%	5	100,0%	21,4%	163,5%
27	???	?????	28	60,7%	3,0%	109,5%	13	84,6%	5,9%	101,7%	8	62,5%	3,0%	3,2%	12	41,7%	1,2%	-4,3%
28	???	?????	27	63,0%	4,4%	110,4%	13	46,2%	6,1%	49,1%	7	42,9%	6,9%	19,6%	21	42,9%	3,6%	51,7%
29	???	?????	29	41,4%	-1,7%	-49,3%	14	35,7%	-3,0%	-44,8%	8	50,0%	-7,9%	-55,5%	13	30,8%	-0,8%	-22,0%
30	???	?????	26	42,3%	0,2%	-3,8%	11	54,5%	2,9%	17,7%	7	42,9%	3,8%	7,6%	15	40,0%	1,6%	6,2%
31	???	?????	15	40,0%	2,4%	16,7%	8	37,5%	-0,4%	-23,6%	4	25,0%	-7,1%	-34,2%	10	40,0%	2,2%	7,6%
32	???	?????	27	66,7%	1,9%	60,2%	14	71,4%	1,4%	0,7%	7	71,4%	3,4%	13,8%	6	66,7%	9,9%	64,9%
33	???	?????	18	33,3%	-6,9%	-80,1%	9	44,4%	-0,7%	-36,1%	5	40,0%	-10,7%	-72,0%	22	31,8%	-2,3%	-56,0%
34	???	?????	31	58,1%	0,7%	0,7%	15	53,3%	1,8%	15,5%	8	62,5%	7,0%	41,3%	14	42,9%	1,9%	6,7%
35	???	?????	31	54,8%	0,7%	5,0%	14	64,3%	3,4%	26,5%	8	50,0%	13,9%	132,5%	13	46,2%	5,1%	60,2%
36	???	?????	27	59,3%	6,5%	220,0%	14	42,9%	-0,8%	-61,5%	7	14,3%	17,1%	-36,2%	22	50,0%	4,3%	90,0%
37	???	?????	29	55,2%	0,2%	-1,4%	13	53,8%	2,6%	25,3%	7	42,9%	5,1%	25,9%	8	37,5%	1,5%	1,8%
38	???	?????	27	44,4%	3,2%	41,9%	14	42,9%	5,7%	2,7%	7	57,1%	34,3%	186,4%	27	29,6%	-2,0%	-58,2%
39	???	?????	33	51,5%	0,4%	-7,1%	13	46,2%	-0,1%	-25,5%	8	50,0%	-1,9%	-22,6%	15	40,0%	1,2%	-1,6%
40	???	?????	27	55,6%	2,4%	69,4%	14	50,0%	3,2%	23,1%	8	37,5%	1,5%	-13,7%	21	33,3%	-1,4%	-40,2%
41	???	?????	25	56,0%	4,5%	50,7%	12	58,3%	24,4%	377,6%	8	25,0%	214,7%	1010,7%	27	51,9%	7,2%	314,2%
42	???	?????	29	62,1%	3,6%	131,7%	14	71,4%	10,5%	194,1%	8	62,5%	16,3%	137,1%	20	50,0%	4,2%	73,2%
43	???	?????	28	60,7%	3,1%	113,1%	13	69,2%	4,0%	39,5%	8	62,5%	9,4%	92,9%	10	70,0%	10,2%	139,6%
1	???	?????	15	40,0%	-0,9%	-22,2%	7	57,1%	2,5%	11,3%	4	50,0%	-4,2%	-17,5%	14	28,6%	-3,0%	-42,7%
2	???	?????	12	50,0%	0,7%	-2,0%	6	66,7%	-3,5%	-38,8%	4	25,0%	-22,3%	-68,4%	14	28,6%	-2,4%	-40,6%
3	???	?????	28	60,7%	3,5%	113,8%	13	53,8%	5,8%	70,5%	7	57,1%	9,1%	55,2%	18	38,9%	1,3%	-0,6%
4	???	?????	20	70,0%	2,1%	44,3%	9	55,6%	4,2%	37,2%	6	66,7%	10,9%	67,7%	9	55,6%	4,9%	40,5%
5	???	?????	28	60,7%	4,8%	193,9%	15	60,0%	9,3%	212,2%	8	62,5%	15,0%	123,3%	21	52,4%	6,6%	191,7%
6	???	?????	29	55,2%	4,0%	124,8%	13	69,2%	11,6%	226,1%	7	42,9%	-1,3%	-35,6%	22	31,8%	-1,3%	-44,0%

# 20-day Moving Average: All Stocks (part 2)

[Click Here To Unlock](#)

EXIT Strategy			After 20-days (1-Month)			After 60-days (3-Months)			After 120-days (6-Months)			Stop loss: -10% Take Profit: +20%						
No.	Ticker	Company	No.	Positive Trades	Average Return	Total Return	No.	Positive Trades	Average Return	Total Return	No.	Positive Trades	Average Return	Total Return	No.	Positive Trades	Average Return	Total Return
51	???	?????	10	40,0%	-2,4%	-32,9%	7	28,6%	-12,4%	-66,0%	4	0,0%	-16,5%	-59,2%	15	40,0%	1,4%	1,3%
52	???	?????	32	65,6%	2,8%	121,8%	14	57,1%	7,6%	154,1%	8	50,0%	8,1%	61,5%	15	53,3%	6,3%	110,3%
53	???	?????	29	62,1%	1,7%	26,7%	13	53,8%	3,2%	41,9%	7	57,1%	5,8%	37,9%	12	50,0%	5,0%	55,2%
54	???	?????	30	50,0%	1,0%	-16,6%	13	69,2%	3,7%	6,0%	8	62,5%	14,6%	54,4%	26	50,0%	4,0%	89,2%
55	???	?????	31	61,3%	3,5%	128,6%	14	57,1%	5,5%	40,2%	8	50,0%	10,5%	50,9%	12	58,3%	7,5%	95,5%
56	???	?????	33	57,6%	0,6%	15,0%	14	57,1%	0,0%	-6,2%	8	62,5%	4,3%	29,4%	8	50,0%	3,3%	17,9%
57	???	?????	23	52,2%	1,5%	19,1%	10	50,0%	2,8%	18,9%	6	33,3%	6,4%	22,3%	18	33,3%	-1,5%	-39,0%
58	???	?????	27	59,3%	2,6%	76,7%	13	69,2%	7,6%	131,3%	7	42,9%	-0,5%	-25,1%	13	53,8%	6,0%	81,1%
59	???	?????	26	38,5%	-1,4%	-55,9%	13	53,8%	0,7%	-28,6%	8	50,0%	3,5%	-10,2%	19	36,8%	0,8%	-8,3%
60	???	?????	32	53,1%	1,1%	10,4%	15	26,7%	-4,9%	-71,6%	8	37,5%	-6,6%	-54,5%	20	30,0%	-2,1%	-50,2%
61	???	?????	27	55,6%	2,6%	80,8%	13	53,8%	6,3%	85,5%	8	50,0%	7,3%	48,0%	14	42,9%	4,4%	48,0%
62	???	?????	26	53,8%	1,4%	-23,2%	13	46,2%	3,2%	-34,5%	7	42,9%	0,9%	-30,2%	22	45,5%	2,6%	-1,3%
63	???	?????	13	46,2%	-1,1%	-37,4%	6	50,0%	-0,8%	-21,8%	4	50,0%	-7,1%	-28,4%	13	38,5%	-1,2%	-26,9%
64	???	?????	25	40,0%	0,9%	-39,9%	12	41,7%	-4,8%	-62,7%	7	42,9%	3,7%	-34,1%	25	32,0%	-0,4%	-35,2%
65	???	?????	31	54,8%	1,9%	37,9%	14	64,3%	3,8%	47,0%	8	62,5%	0,8%	-14,9%	22	40,9%	1,7%	7,1%
66	???	?????	29	55,2%	2,4%	13,4%	13	53,8%	10,6%	98,6%	8	62,5%	14,3%	80,6%	25	52,0%	6,2%	202,0%
67	???	?????	31	48,4%	0,8%	4,3%	14	64,3%	5,3%	76,0%	7	57,1%	1,1%	-11,5%	12	41,7%	2,2%	11,4%
68	???	?????	32	71,9%	5,3%	344,9%	13	69,2%	11,7%	256,4%	8	75,0%	19,1%	252,5%	16	62,5%	9,4%	251,6%
69	???	?????	29	44,8%	0,7%	-26,7%	14	42,9%	1,4%	-35,4%	8	37,5%	3,6%	-37,7%	26	23,1%	-4,2%	-75,4%
70	???	?????	26	53,8%	0,8%	-22,2%	13	53,8%	3,4%	-14,2%	8	37,5%	1,6%	-48,8%	27	40,7%	1,2%	-4,9%
71	???	?????	27	48,1%	1,7%	-0,5%	13	53,8%	3,0%	-3,4%	8	37,5%	0,2%	-52,0%	26	38,5%	0,2%	-28,0%
72	???	?????	16	37,5%	12,3%	207,4%	8	62,5%	31,2%	266,1%	5	80,0%	-6,3%	-36,8%	8	50,0%	24,7%	218,9%
73	???	?????	32	43,8%	0,5%	-6,1%	14	42,9%	-2,5%	-51,2%	8	37,5%	-3,2%	-48,9%	16	31,3%	-1,3%	-32,2%
74	???	?????	31	54,8%	3,4%	91,8%	13	53,8%	11,8%	202,3%	8	62,5%	8,2%	12,3%	23	43,5%	2,8%	39,0%
75	???	?????	34	47,1%	0,7%	-18,3%	14	64,3%	4,1%	49,3%	7	71,4%	12,9%	96,8%	32	34,4%	-1,1%	-55,1%
76	???	?????	28	50,0%	-0,9%	-42,8%	13	53,8%	-0,5%	-39,2%	8	50,0%	-2,6%	-60,8%	13	30,8%	-3,3%	-47,9%
1	???	?????	18	50,0%	10,2%	298,7%	8	50,0%	35,5%	495,1%	4	50,0%	139,0%	763,6%	12	41,7%	11,4%	128,6%
2	???	?????	13	69,2%	1,8%	22,6%	6	50,0%	1,5%	-1,8%	4	50,0%	-1,7%	-6,6%	11	36,4%	0,4%	-12,9%
3	???	?????	7	57,1%	14,1%	95,3%	5	40,0%	24,9%	9,7%	3	66,7%	9,9%	23,6%	7	42,9%	3,6%	7,4%
4	???	?????	26	69,2%	6,2%	340,5%	12	58,3%	4,5%	18,9%	7	42,9%	8,2%	50,5%	15	53,3%	6,1%	97,2%
5	???	?????	10	80,0%	11,0%	162,0%	5	60,0%	11,0%	53,6%	3	66,7%	14,5%	45,8%	8	62,5%	9,3%	89,0%
6	???	?????	30	50,0%	0,7%	-26,1%	14	35,7%	-2,7%	-53,4%	8	37,5%	-5,6%	-61,0%	21	33,3%	-1,4%	-42,5%
7	???	?????	24	62,5%	9,4%	551,3%	13	69,2%	17,0%	172,0%	7	85,7%	46,5%	926,1%	23	47,8%	5,0%	130,7%
8	???	?????	31	32,3%	-2,4%	-61,8%	14	35,7%	-1,2%	-47,9%	7	42,9%	1,9%	-35,8%	24	33,3%	-0,4%	-34,7%
9	???	?????	29	51,7%	1,5%	-17,2%	13	46,2%	23,8%	379,2%	8	62,5%	25,7%	239,3%	31	45,2%	5,0%	148,8%
10	???	?????	28	57,1%	3,8%	125,2%	13	76,9%	7,3%	66,0%	8	37,5%	9,6%	19,9%	19	42,1%	3,0%	30,9%
11	???	?????	29	41,4%	-3,4%	-88,4%	14	14,3%	-6,6%	-92,7%	8	25,0%	4,7%	-82,9%	35	25,7%	-3,3%	-81,5%
12	???	?????	14	35,7%	-4,2%	-50,5%	7	57,1%	-0,3%	-17,3%	4	50,0%	-6,7%	-50,7%	16	37,5%	0,9%	-6,7%
13	???	?????	29	44,8%	-1,2%	-72,0%	13	61,5%	-2,0%	-63,8%	7	57,1%	4,4%	-61,6%	20	35,0%	-1,2%	-38,6%
14	???	?????	33	42,4%	-0,1%	-33,2%	14	42,9%	19,0%	286,6%	7	42,9%	6,1%	33,6%	31	38,7%	2,0%	10,6%
15	???	?????	15	40,0%	5,0%	26,5%	7	42,9%	18,7%	36,7%	5	40,0%	-15,5%	-67,1%	17	35,3%	-0,2%	-25,6%
16	???	?????	33	36,4%	-1,1%	-35,6%	15	46,7%	-1,4%	-24,7%	8	37,5%	-2,4%	-21,4%	9	33,3%	-0,6%	-14,7%
17	???	?????	21	52,4%	-0,1%	-22,5%	9	44,4%	-2,4%	-41,3%	6	50,0%	11,0%	5,6%	20	35,0%	-0,1%	-23,7%
18	???	?????	14	50,0%	0,1%	-37,0%	7	71,4%	19,9%	201,6%	4	50,0%	22,8%	75,0%	14	42,9%	1,8%	1,3%
19	???	?????	27	63,0%	3,6%	105,9%	14	57,1%	5,8%	94,7%	7	57,1%	5,1%	-8,2%	14	57,1%	8,3%	147,7%
20	???	?????	32	56,3%	0,4%	-3,0%	14	57,1%	2,4%	21,3%	8	37,5%	-2,0%	-32,3%	12	33,3%	-0,2%	-16,4%



# 4. 50-day Moving Average

## Price Crossed Above 50 MA

The average price of the last 50 days is used as an indication of the mid-term trend, so when the company's price rises above it, a mid-term positive trend may start.

Then, in this section you will find the results of the backtest of all the stocks that in the last trading session have risen above the average price of the last 50 days (50 MA).

For every time this signal has occurred in the last 4 years, an operation is simulated that ends in 4 different ways: after 20 days, after 60 days, after 120 days and using a strategy with a stop loss of -10% and a take profit of +20%. In the next 3 pages there are the results of the backtest.



**Stocks**

Analyzed

74

**Strategies**

Analyzed

296

**Trades**

Analyzed

3.214

## What's in this section

### Rankings

In this subsection there are 3 rankings:

#### Top 10 by Positive Trades:

Shows the 10 strategies with the most positive trades

#### Top 10 by Average Return:

Shows the 10 strategies with the highest average return per trade

#### Top 10 by Total Return:

Shows the 10 strategies with the highest total return assuming a portfolio with a \$10,000 starting capital invested in each trade.

### All Stocks

This subsection shows the results of the backtest for each stocks analyzed.

As previously explained, the results of the backtest are based on the entry strategy which is based on the price that crossed above the 50-day moving average with the following 4 ways to close the trade:

**After 20 days** (1 month)

**After 60 days** (3 months)

**After 120 days** (6 months)

**Stop loss -10% and Take profit +20%**

## 4.1 50-day Moving Average: Rankings

In this section you will find 3 rankings that show the 10 best strategies in terms of positive trades, average return per trade and total return.

In the following section you will find the list of each individual stocks with the results of the backtest for each of the 4 exit strategies: after 20 days, after 60 days, after 120 days and with the use of a stop loss of -10% and a take profit of +20%. Backtests do not consider overlapping trades. See "Glossary" for more information.

### Top 10 Strategies by Positive Trades

<b>TOP 10</b> by <b>POSITIVE TRADES</b>	EXIT Strategy	Ticker	Company	No.	Positive Trades	Average Return	Total Return
	After 20-days	???	?????	18	88,9%	3,0%	33,6%
	After 120-days	???	?????	7	85,7%	18,1%	171,6%
	After 60-days	???	?????	11	81,8%	2,7%	26,9%
	After 60-days	???	?????	12	75,0%	2,2%	8,6%
	After 20-days	???	?????	4	75,0%	3,5%	14,3%
	After 20-days	???	?????	16	75,0%	3,9%	76,3%
	After 20-days	???	?????	20	75,0%	1,8%	12,3%
	After 20-days	???	?????	15	73,3%	8,7%	196,7%
	After 60-days	???	?????	11	72,7%	5,5%	56,1%
After 60-days	???	?????	11	72,7%	4,3%	50,8%	

[Click Here To Unlock](#)

### Top 10 Strategies by Average Return

<b>TOP 10</b> by <b>AVERAGE RETURN</b>	EXIT Strategy	Ticker	Company	No.	Positive Trades	Average Return	Total Return
	After 120-days	???	?????	5	20,0%	108,4%	383,8%
	After 120-days	???	?????	8	25,0%	68,9%	205,9%
	After 60-days	???	?????	12	33,3%	40,5%	320,4%
	After 60-days	???	?????	7	42,9%	38,9%	236,2%
	After 120-days	???	?????	6	66,7%	27,1%	196,4%
	After 120-days	???	?????	6	50,0%	22,8%	-2,4%
	After 120-days	???	?????	5	40,0%	21,7%	50,1%
	After 120-days	???	?????	7	85,7%	18,1%	171,6%
	After 60-days	???	?????	10	60,0%	14,8%	163,3%
SL: -10%   TP: +20%	???	?????	6	66,7%	13,4%	95,0%	

[Click Here To Unlock](#)

### Top 10 Strategies by Total Return

<b>TOP 10</b> by <b>TOTAL RETURN</b>	EXIT Strategy	Ticker	Company	No.	Positive Trades	Average Return	Total Return
	After 120-days	???	?????	5	20,0%	108,4%	383,8%
	After 60-days	???	?????	12	33,3%	40,5%	320,4%
	After 60-days	???	?????	7	42,9%	38,9%	236,2%
	After 120-days	???	?????	8	25,0%	68,9%	205,9%
	After 20-days	???	?????	15	73,3%	8,7%	196,7%
	After 120-days	???	?????	6	66,7%	27,1%	196,4%
	After 120-days	???	?????	7	85,7%	18,1%	171,6%
	After 20-days	???	?????	19	63,2%	6,2%	166,3%
	After 60-days	???	?????	10	60,0%	14,8%	163,3%
After 60-days	???	?????	11	63,6%	9,3%	140,9%	

[Click Here To Unlock](#)

# 4.2 50-day Moving Average: All Stocks (part 1)

[Click Here To Unlock](#)

EXIT Strategy																		
			After 20-days (1-Month)				After 60-days (3-Months)				After 120-days (6-Months)				Stop loss: -10% Take Profit: +20%			
No.	Ticker	Company	No.	Positive Trades	Average Return	Total Return	No.	Positive Trades	Average Return	Total Return	No.	Positive Trades	Average Return	Total Return	No.	Positive Trades	Average Return	Total Return
1	???	?????	17	70,6%	1,8%	30,4%	12	58,3%	3,6%	46,2%	7	71,4%	10,2%	83,7%	7	71,4%	11,5%	101,2%
2	???	?????	19	52,6%	0,9%	17,5%	11	72,7%	4,3%	50,8%	7	71,4%	7,5%	57,0%	6	50,0%	6,1%	34,3%
3	???	?????	22	59,1%	0,4%	-5,0%	13	46,2%	0,7%	-4,7%	7	57,1%	10,6%	79,7%	12	41,7%	2,7%	17,9%
4	???	?????	19	47,4%	1,5%	27,8%	11	45,5%	-1,2%	-21,7%	6	66,7%	-1,6%	-12,8%	6	50,0%	6,8%	35,5%
5	???	?????	21	38,1%	-1,2%	-30,3%	11	54,5%	4,4%	36,8%	7	57,1%	8,7%	63,0%	12	41,7%	2,4%	14,5%
6	???	?????	24	50,0%	-0,3%	-19,6%	13	53,8%	0,6%	-5,7%	7	42,9%	3,6%	13,2%	13	30,8%	-0,6%	-19,2%
7	???	?????	15	73,3%	8,7%	196,7%	10	60,0%	10,9%	98,1%	7	57,1%	13,2%	69,7%	10	60,0%	9,1%	113,2%
1	???	?????	19	47,4%	-1,6%	-32,0%	12	25,0%	-5,3%	-50,9%	7	42,9%	-7,1%	-45,5%	12	8,3%	-9,7%	-73,2%
2	???	?????	18	44,4%	-1,4%	-42,4%	11	45,5%	5,3%	3,5%	7	57,1%	9,9%	-3,2%	18	33,3%	-1,3%	-38,7%
3	???	?????	15	66,7%	1,9%	20,9%	9	44,4%	-1,0%	-13,1%	6	50,0%	9,0%	52,4%	7	57,1%	5,3%	29,1%
4	???	?????	19	57,9%	2,0%	39,7%	11	54,5%	2,5%	3,6%	7	57,1%	3,2%	2,1%	6	66,7%	13,4%	95,0%
5	???	?????	18	27,8%	-2,6%	-41,1%	9	22,2%	-2,8%	-24,5%	5	60,0%	-4,2%	-21,7%	9	11,1%	-6,8%	-49,3%
6	???	?????	19	47,4%	0,2%	-5,0%	10	40,0%	2,2%	7,0%	7	71,4%	4,9%	16,1%	10	40,0%	2,6%	12,5%
7	???	?????	24	50,0%	2,1%	18,6%	12	66,7%	1,0%	-25,5%	7	71,4%	11,0%	39,1%	17	47,1%	3,9%	51,2%
8	???	?????	23	43,5%	2,6%	48,6%	11	54,5%	3,6%	23,8%	6	66,7%	9,6%	62,4%	14	42,9%	3,4%	27,7%
9	???	?????	19	63,2%	2,1%	43,5%	10	60,0%	0,7%	0,1%	7	42,9%	-1,9%	-22,2%	8	37,5%	1,2%	0,2%
10	???	?????	19	52,6%	0,3%	0,4%	10	50,0%	2,9%	16,6%	6	66,7%	5,8%	22,2%	12	33,3%	0,0%	-13,8%
11	???	?????	20	75,0%	1,8%	12,3%	11	81,8%	2,7%	26,9%	7	71,4%	6,5%	47,9%	7	71,4%	12,8%	117,9%
12	???	?????	24	50,0%	-1,6%	-43,2%	13	46,2%	-1,3%	-28,2%	6	50,0%	1,2%	-11,6%	11	36,4%	-0,9%	-24,1%
13	???	?????	19	52,6%	0,6%	-13,9%	11	54,5%	3,9%	5,2%	7	28,6%	1,6%	-16,7%	14	35,7%	-1,7%	-39,8%
14	???	?????	21	52,4%	-0,5%	-19,0%	12	41,7%	-2,0%	-30,1%	6	16,7%	-6,3%	-35,1%	10	20,0%	-4,6%	-43,2%
15	???	?????	11	63,6%	2,6%	29,4%	8	50,0%	6,5%	55,9%	5	60,0%	7,0%	36,5%	11	36,4%	1,2%	0,4%
16	???	?????	8	37,5%	-2,2%	-31,1%	5	20,0%	-3,9%	-31,8%	3	33,3%	-1,9%	-10,6%	9	33,3%	-1,6%	-23,2%
17	???	?????	16	75,0%	3,9%	76,3%	10	60,0%	1,5%	6,3%	7	71,4%	2,6%	10,1%	8	50,0%	6,5%	48,9%
18	???	?????	21	42,9%	1,6%	12,6%	12	58,3%	4,0%	40,1%	6	50,0%	1,9%	0,9%	17	41,2%	2,2%	18,3%
19	???	?????	21	57,1%	2,5%	53,0%	12	66,7%	6,3%	61,6%	7	85,7%	18,1%	171,6%	13	53,8%	5,4%	69,0%
20	???	?????	23	47,8%	-1,9%	-52,0%	11	18,2%	-10,1%	-79,9%	6	16,7%	-13,8%	-63,8%	22	18,2%	-4,2%	-70,1%
21	???	?????	16	50,0%	4,5%	64,0%	10	60,0%	14,8%	163,3%	6	66,7%	27,1%	196,4%	16	37,5%	0,8%	-9,9%
22	???	?????	10	50,0%	-6,6%	-53,7%	5	20,0%	-10,3%	-47,2%	4	25,0%	-23,2%	-68,9%	7	28,6%	0,2%	-12,3%
23	???	?????	19	42,1%	-1,6%	-30,8%	13	46,2%	-0,8%	-21,3%	7	28,6%	-1,9%	-24,3%	11	36,4%	0,6%	-5,4%
24	???	?????	16	62,5%	2,7%	45,0%	11	63,6%	4,2%	37,0%	7	57,1%	3,4%	16,8%	12	41,7%	2,5%	15,0%
25	???	?????	19	31,6%	-2,1%	-39,5%	13	38,5%	-1,5%	-30,3%	7	28,6%	-9,7%	-56,9%	14	14,3%	-6,4%	-63,7%
26	???	?????	16	56,3%	1,9%	28,6%	9	44,4%	0,8%	-3,2%	6	66,7%	8,8%	53,4%	10	50,0%	5,2%	48,6%
27	???	?????	18	50,0%	-1,1%	-34,7%	13	53,8%	0,8%	-22,8%	6	16,7%	-1,4%	-38,4%	18	33,3%	-1,9%	-46,2%
28	???	?????	23	65,2%	3,1%	69,0%	13	46,2%	0,3%	-21,0%	7	42,9%	-0,3%	-26,4%	12	41,7%	1,9%	3,5%
29	???	?????	23	60,9%	3,0%	63,1%	11	45,5%	7,4%	66,6%	7	57,1%	8,6%	60,8%	15	40,0%	2,2%	9,0%
30	???	?????	8	50,0%	0,2%	-5,9%	5	40,0%	3,0%	-22,5%	3	33,3%	4,6%	-14,5%	7	28,6%	-1,7%	-19,0%
31	???	?????	10	50,0%	-4,2%	-41,4%	5	60,0%	-4,2%	-35,9%	2	0,0%	-23,6%	-43,5%	11	36,4%	-0,1%	-15,2%
32	???	?????	21	66,7%	4,2%	121,8%	11	63,6%	9,3%	140,9%	7	42,9%	5,7%	25,6%	15	33,3%	-2,2%	-40,7%
33	???	?????	7	57,1%	1,7%	8,0%	4	50,0%	2,6%	4,9%	3	33,3%	3,4%	9,5%	5	40,0%	3,2%	11,5%
34	???	?????	17	52,9%	5,5%	117,2%	11	63,6%	10,2%	80,1%	8	25,0%	-6,6%	-72,6%	14	50,0%	6,1%	86,4%
35	???	?????	6	50,0%	5,6%	3,8%	4	25,0%	-20,0%	-65,0%	3	33,3%	12,6%	-20,2%	7	42,9%	8,6%	48,3%
36	???	?????	7	42,9%	4,6%	6,0%	4	50,0%	11,6%	23,2%	2	50,0%	7,4%	14,8%	7	42,9%	6,2%	30,9%
37	???	?????	11	63,6%	7,2%	91,5%	8	62,5%	-0,5%	-41,4%	6	50,0%	22,8%	-2,4%	8	62,5%	9,3%	85,7%
38	???	?????	15	60,0%	3,6%	55,0%	8	62,5%	7,6%	63,1%	5	60,0%	9,4%	47,3%	8	25,0%	-2,8%	-26,5%
39	???	?????	12	33,3%	-11,7%	-81,1%	6	33,3%	-18,3%	-77,2%	3	33,3%	-30,1%	-75,1%	14	21,4%	-4,1%	-53,4%
40	???	?????	17	58,8%	-0,1%	-13,6%	11	36,4%	-3,2%	-47,8%	7	42,9%	-3,0%	-42,4%	12	33,3%	-1,2%	-25,6%
41	???	?????	18	61,1%	2,0%	25,2%	11	54,5%	-0,6%	-22,8%	7	57,1%	0,8%	-9,7%	11	36,4%	0,4%	-8,1%
42	???	?????	16	31,3%	2,3%	11,9%	10	30,0%	0,7%	-35,3%	7	28,6%	0,1%	-47,2%	15	26,7%	-1,0%	-33,9%



# 5. 100-day Moving Average

## Price Crossed Above 100 MA

The average price of the last 100 days is used as an indication of the mid/long-term trend, so when the company's price rises above it, a mid/long-term positive trend may start.

Then, in this section you will find the results of the backtest of all the stocks that in the last trading session have risen above the average price of the last 100 days (100 MA).

For every time this signal has occurred in the last 4 years, an operation is simulated that ends in 4 different ways: after 20 days, after 60 days, after 120 days and using a strategy with a stop loss of -10% and a take profit of +20%. In the next 3 pages there are the results of the backtest.



**Stocks**

Analyzed

49

**Strategies**

Analyzed

196

**Trades**

Analyzed

1.561

## What's in this section

### Rankings

In this subsection there are 3 rankings:

#### Top 10 by Positive Trades:

Shows the 10 strategies with the most positive trades

#### Top 10 by Average Return:

Shows the 10 strategies with the highest average return per trade

#### Top 10 by Total Return:

Shows the 10 strategies with the highest total return assuming a portfolio with a \$10,000 starting capital invested in each trade.

### All Stocks

This subsection shows the results of the backtest for each stocks analyzed.

As previously explained, the results of the backtest are based on the entry strategy which is based on the price that crossed above the 100-day moving average with the following 4 ways to close the trade:

**After 20 days** (1 month)

**After 60 days** (3 months)

**After 120 days** (6 months)

**Stop loss -10% and Take profit +20%**

# 5.1 100-day Moving Average: Rankings

In this section you will find 3 rankings that show the 10 best strategies in terms of positive trades, average return per trade and total return.

In the following section you will find the list of each individual stocks with the results of the backtest for each of the 4 exit strategies: after 20 days, after 60 days, after 120 days and with the use of a stop loss of -10% and a take profit of +20%. Backtests do not consider overlapping trades. See "Glossary" for more information.

## Top 10 Strategies by Positive Trades

<b>TOP 10</b> by <b>POSITIVE TRADES</b>	EXIT Strategy	Ticker	Company	No.	Positive Trades	Average Return	Total Return
	After 120-days	???	?????	6	100,0%	33,2%	423,3%
	After 60-days	???	?????	8	100,0%	12,2%	143,1%
	SL: -10%   TP: +20%	???	?????	9	88,9%	17,9%	321,9%
	After 120-days	???	?????	5	80,0%	40,3%	352,3%
	After 120-days	???	?????	5	80,0%	108,9%	306,0%
	After 120-days	???	?????	5	80,0%	16,0%	100,7%
	After 60-days	???	?????	9	77,8%	3,5%	7,0%
	After 20-days	???	?????	13	76,9%	3,6%	55,6%
	After 60-days	???	?????	4	75,0%	4,7%	19,4%
After 20-days	???	?????	11	72,7%	5,8%	58,6%	

[Click Here To Unlock](#)

## Top 10 Strategies by Average Return

<b>TOP 10</b> by <b>AVERAGE RETURN</b>	EXIT Strategy	Ticker	Company	No.	Positive Trades	Average Return	Total Return
	After 120-days	???	?????	5	80,0%	108,9%	306,0%
	After 120-days	???	?????	5	80,0%	40,3%	352,3%
	After 120-days	???	?????	6	66,7%	38,8%	357,2%
	After 120-days	???	?????	6	100,0%	33,2%	423,3%
	After 120-days	???	?????	6	66,7%	29,6%	196,1%
	After 60-days	???	?????	8	62,5%	20,7%	227,3%
	After 60-days	???	?????	10	50,0%	19,7%	170,0%
	After 60-days	???	?????	5	20,0%	18,4%	-51,9%
	SL: -10%   TP: +20%	???	?????	9	88,9%	17,9%	321,9%
After 60-days	???	?????	10	30,0%	17,4%	55,2%	

[Click Here To Unlock](#)

## Top 10 Strategies by Total Return

<b>TOP 10</b> by <b>TOTAL RETURN</b>	EXIT Strategy	Ticker	Company	No.	Positive Trades	Average Return	Total Return
	After 120-days	???	?????	6	100,0%	33,2%	423,3%
	After 120-days	???	?????	6	66,7%	38,8%	357,2%
	After 120-days	???	?????	5	80,0%	40,3%	352,3%
	SL: -10%   TP: +20%	???	?????	9	88,9%	17,9%	321,9%
	After 120-days	???	?????	5	80,0%	108,9%	306,0%
	After 60-days	???	?????	8	62,5%	20,7%	227,3%
	After 20-days	???	?????	16	50,0%	12,6%	215,3%
	After 120-days	???	?????	6	66,7%	29,6%	196,1%
	After 60-days	???	?????	10	50,0%	19,7%	170,0%
After 20-days	???	?????	17	64,7%	6,1%	152,1%	

[Click Here To Unlock](#)

# 5.2 100-day Moving Average: All Stocks (part 1)

[Click Here To Unlock](#)

EXIT Strategy			After 20-days (1-Month)			After 60-days (3-Months)			After 120-days (6-Months)			Stop loss: -10% Take Profit: +20%						
No.	Ticker	Company	No.	Positive Trades	Average Return	Total Return	No.	Positive Trades	Average Return	Total Return	No.	Positive Trades	Average Return	Total Return	No.	Positive Trades	Average Return	Total Return
1	???	?????	14	64,3%	2,5%	35,2%	9	77,8%	3,5%	7,0%	7	71,4%	4,8%	-25,1%	9	55,6%	5,4%	45,2%
2	???	?????	11	36,4%	-3,0%	-33,2%	7	57,1%	4,1%	17,3%	5	40,0%	6,5%	12,8%	11	36,4%	-0,6%	-18,4%
3	???	?????	12	58,3%	0,5%	-1,0%	8	50,0%	3,3%	17,4%	5	40,0%	9,5%	41,2%	10	30,0%	-0,4%	-16,1%
4	???	?????	17	58,8%	0,8%	4,1%	10	60,0%	4,0%	11,2%	5	60,0%	11,6%	39,9%	8	37,5%	2,4%	8,6%
5	???	?????	13	76,9%	3,6%	55,6%	10	50,0%	0,3%	-2,2%	6	66,7%	4,7%	26,7%	4	50,0%	4,0%	10,9%
6	???	?????	7	57,1%	-2,6%	-21,2%	5	60,0%	3,4%	9,1%	4	50,0%	6,4%	14,1%	6	33,3%	-0,6%	-9,9%
1	???	?????	8	50,0%	-3,3%	-27,2%	6	33,3%	-10,8%	-52,3%	3	33,3%	-24,1%	-61,2%	8	12,5%	-7,4%	-48,8%
2	???	?????	20	45,0%	1,1%	-11,0%	11	45,5%	-2,0%	-46,3%	8	50,0%	-4,5%	-46,2%	12	25,0%	-3,4%	-42,9%
3	???	?????	10	70,0%	5,8%	67,1%	7	57,1%	12,7%	98,0%	5	60,0%	3,8%	0,9%	7	57,1%	7,5%	51,5%
4	???	?????	7	57,1%	7,0%	42,7%	4	25,0%	-11,2%	-45,4%	3	33,3%	-17,4%	-63,4%	7	42,9%	3,1%	12,4%
5	???	?????	12	50,0%	4,1%	57,7%	7	57,1%	0,6%	-3,7%	5	60,0%	13,1%	69,2%	5	60,0%	10,4%	54,2%
6	???	?????	10	60,0%	2,8%	28,3%	6	50,0%	1,2%	4,2%	3	66,7%	1,2%	3,4%	3	33,3%	-0,3%	-3,7%
7	???	?????	4	50,0%	3,0%	8,0%	2	100,0%	17,3%	35,5%	2	50,0%	11,8%	20,8%	3	66,7%	10,4%	29,3%
8	???	?????	17	64,7%	6,1%	152,1%	8	100,0%	12,2%	143,1%	6	100,0%	33,2%	423,3%	9	88,9%	17,9%	321,9%
9	???	?????	18	22,2%	-4,6%	-63,9%	9	33,3%	-2,9%	-39,1%	7	28,6%	-7,8%	-56,3%	9	22,2%	-6,9%	-55,2%
10	???	?????	13	46,2%	1,3%	10,8%	9	55,6%	-3,1%	-31,6%	6	50,0%	-4,2%	-26,5%	7	42,9%	1,5%	0,5%
11	???	?????	11	36,4%	-4,3%	-53,8%	8	50,0%	6,5%	36,6%	5	40,0%	13,8%	28,4%	11	36,4%	1,0%	-3,4%
12	???	?????	14	42,9%	7,9%	124,8%	10	50,0%	19,7%	170,0%	6	66,7%	38,8%	357,2%	15	40,0%	2,2%	13,3%
13	???	?????	15	33,3%	-2,9%	-42,8%	9	44,4%	4,8%	13,7%	6	50,0%	8,0%	18,0%	10	30,0%	-0,9%	-19,4%
14	???	?????	12	58,3%	1,8%	18,2%	7	71,4%	8,2%	59,0%	5	80,0%	16,0%	100,7%	8	62,5%	8,6%	76,9%
15	???	?????	7	14,3%	-8,6%	-48,6%	5	20,0%	-5,5%	-28,4%	3	0,0%	-15,6%	-40,7%	7	14,3%	-5,4%	-35,8%
16	???	?????	19	42,1%	-0,8%	-33,6%	11	54,5%	1,1%	-5,9%	7	42,9%	-2,6%	-23,0%	16	25,0%	-3,3%	-51,8%
17	???	?????	17	35,3%	-0,2%	-10,3%	9	66,7%	2,6%	4,6%	5	60,0%	10,8%	22,5%	11	36,4%	0,2%	-11,3%
18	???	?????	8	37,5%	-0,2%	-3,8%	6	50,0%	-5,5%	-34,0%	5	40,0%	-6,6%	-38,3%	7	28,6%	-1,8%	-19,2%
19	???	?????	7	57,1%	2,5%	17,0%	4	75,0%	4,7%	19,4%	2	50,0%	4,8%	9,1%	2	100,0%	13,3%	27,8%
20	???	?????	7	71,4%	2,8%	19,6%	5	60,0%	-0,6%	-16,7%	4	25,0%	1,6%	-1,6%	5	40,0%	1,5%	1,2%
21	???	?????	9	44,4%	5,7%	41,8%	5	60,0%	8,0%	39,6%	4	50,0%	1,1%	-16,0%	7	42,9%	2,1%	4,9%
22	???	?????	7	71,4%	9,3%	43,4%	3	33,3%	-13,1%	-38,1%	2	50,0%	46,1%	33,3%	9	44,4%	3,9%	20,5%
23	???	?????	15	33,3%	-4,4%	-56,6%	9	11,1%	-8,7%	-56,8%	6	16,7%	7,8%	8,0%	11	18,2%	-4,8%	-47,8%
24	???	?????	12	50,0%	0,5%	-3,2%	10	50,0%	-0,2%	-45,1%	5	60,0%	-1,4%	-28,2%	9	44,4%	4,0%	28,8%
25	???	?????	5	40,0%	-0,3%	-20,2%	4	25,0%	-3,4%	-69,1%	3	0,0%	-37,6%	-80,5%	6	50,0%	10,8%	60,2%
26	???	?????	9	44,4%	-6,0%	-58,5%	5	60,0%	-13,3%	-63,5%	4	25,0%	-17,0%	-68,1%	8	37,5%	2,1%	8,2%
27	???	?????	15	46,7%	-3,1%	-47,6%	9	44,4%	-0,9%	-13,8%	6	50,0%	-2,8%	-20,5%	12	25,0%	-3,1%	-39,3%
28	???	?????	13	53,8%	0,5%	3,6%	7	71,4%	6,1%	41,7%	6	50,0%	1,1%	-0,1%	7	42,9%	2,6%	9,9%
29	???	?????	11	72,7%	5,8%	58,6%	8	50,0%	13,7%	-10,0%	5	80,0%	108,9%	306,0%	13	38,5%	-0,9%	-28,9%
30	???	?????	13	46,2%	-2,8%	-41,4%	8	62,5%	1,8%	11,8%	5	40,0%	-1,1%	-9,4%	7	42,9%	3,3%	15,0%
31	???	?????	18	50,0%	1,1%	-3,7%	9	44,4%	-2,8%	-44,9%	5	40,0%	-2,8%	-14,4%	17	17,6%	-5,7%	-69,5%
32	???	?????	15	40,0%	-3,7%	-52,9%	8	37,5%	-11,5%	-65,5%	6	33,3%	-11,8%	-63,8%	14	28,6%	-0,4%	-25,8%
33	???	?????	4	50,0%	-7,6%	-30,5%	3	66,7%	-17,0%	-51,3%	2	50,0%	-23,5%	-47,4%	1	0,0%	-15,1%	-15,1%
34	???	?????	5	20,0%	-13,2%	-55,0%	5	20,0%	18,4%	-51,9%	3	33,3%	16,4%	-40,4%	7	28,6%	-3,2%	-29,1%
35	???	?????	13	30,8%	4,0%	39,5%	8	62,5%	20,7%	227,3%	5	80,0%	40,3%	352,3%	13	38,5%	2,2%	9,4%
36	???	?????	11	63,6%	1,1%	6,0%	7	71,4%	6,5%	44,1%	5	60,0%	9,8%	28,6%	7	42,9%	3,6%	16,7%
37	???	?????	16	50,0%	12,6%	215,3%	10	30,0%	17,4%	55,2%	6	66,7%	29,6%	196,1%	19	31,6%	-1,0%	-35,4%
38	???	?????	13	46,2%	-3,5%	-51,4%	9	33,3%	-14,0%	-84,6%	6	33,3%	-24,8%	-89,2%	12	25,0%	-3,2%	-40,2%
39	???	?????	12	25,0%	-1,9%	-22,5%	7	42,9%	-0,1%	-9,9%	5	20,0%	-5,9%	-33,3%	11	9,1%	-7,7%	-61,7%
40	???	?????	13	30,8%	-0,5%	-10,3%	9	44,4%	6,4%	50,8%	6	50,0%	7,3%	26,9%	9	33,3%	0,2%	-8,4%
41	???	?????	13	53,8%	2,1%	11,3%	7	57,1%	2,1%	-40,5%	5	60,0%	-5,1%	-36,5%	11	45,5%	4,5%	41,5%
42	???	?????	3	66,7%	0,0%	-1,6%	3	66,7%	7,9%	13,8%	3	66,7%	7,5%	-11,9%	3	66,7%	10,3%	29,1%
43	???	?????	2	100,0%	32,3%	65,4%	2	100,0%	21,9%	48,4%	1	100,0%	51,8%	51,8%	2	100,0%	28,4%	64,3%





# 6. 200-day Moving Average

## Price Crossed Above 200 MA

The average price of the last 20 days is used as an indication of the long-term trend, so when the company's price rises above it, a long-term positive trend may start.

Then, in this section you will find the results of the backtest of all the stocks that in the last trading session have risen above the average price of the last 200 days (200 MA).

For every time this signal has occurred in the last 4 years, an operation is simulated that ends in 4 different ways: after 20 days, after 60 days, after 120 days and using a strategy with a stop loss of -10% and a take profit of +20%. In the next 3 pages there are the results of the backtest.



**Stocks**

Analyzed

30

**Strategies**

Analyzed

120

**Trades**

Analyzed

612

## What's in this section

### Rankings

In this subsection there are 3 rankings:

#### Top 10 by Positive Trades:

Shows the 10 strategies with the most positive trades

#### Top 10 by Average Return:

Shows the 10 strategies with the highest average return per trade

#### Top 10 by Total Return:

Shows the 10 strategies with the highest total return assuming a portfolio with a \$10,000 starting capital invested in each trade.

### All Stocks

This subsection shows the results of the backtest for each stocks analyzed.

As previously explained, the results of the backtest are based on the entry strategy which is based on the price that crossed above the 200-day moving average with the following 4 ways to close the trade:

**After 20 days** (1 month)

**After 60 days** (3 months)

**After 120 days** (6 months)

**Stop loss -10% and Take profit +20%**

# 6.1 200-day Moving Average: Rankings

In this section you will find 3 rankings that show the 10 best strategies in terms of positive trades, average return per trade and total return.

In the following section you will find the list of each individual stocks with the results of the backtest for each of the 4 exit strategies: after 20 days, after 60 days, after 120 days and with the use of a stop loss of -10% and a take profit of +20%. Backtests do not consider overlapping trades. See "Glossary" for more information.

## Top 10 Strategies by Positive Trades

<b>TOP 10</b> by <b>POSITIVE TRADES</b>	EXIT Strategy	Ticker	Company	No.	Positive Trades	Average Return	Total Return
	SL: -10%   TP: +20%	???	?????	3	100,0%	20,8%	76,3%
	After 120-days	???	?????	3	100,0%	20,0%	64,9%
	After 120-days	???	?????	4	100,0%	15,8%	78,6%
	After 60-days	???	?????	3	100,0%	18,6%	65,8%
	After 20-days	???	?????	5	100,0%	3,9%	20,8%
	After 20-days	???	?????	9	88,9%	8,7%	101,2%
	After 60-days	???	?????	5	80,0%	14,2%	83,8%
	SL: -10%   TP: +20%	???	?????	4	75,0%	10,6%	44,8%
	After 120-days	???	?????	4	75,0%	8,7%	35,7%
After 60-days	???	?????	4	75,0%	11,6%	48,3%	

[Click Here To Unlock](#)

## Top 10 Strategies by Average Return

<b>TOP 10</b> by <b>AVERAGE RETURN</b>	EXIT Strategy	Ticker	Company	No.	Positive Trades	Average Return	Total Return
	After 120-days	???	?????	4	50,0%	35,6%	-37,8%
	After 120-days	???	?????	5	60,0%	21,9%	117,8%
	After 60-days	???	?????	7	57,1%	20,9%	184,0%
	SL: -10%   TP: +20%	???	?????	3	100,0%	20,8%	76,3%
	After 120-days	???	?????	3	66,7%	20,5%	32,1%
	After 120-days	???	?????	3	100,0%	20,0%	64,9%
	After 60-days	???	?????	3	100,0%	18,6%	65,8%
	After 120-days	???	?????	4	50,0%	16,3%	34,7%
	After 120-days	???	?????	4	100,0%	15,8%	78,6%
After 120-days	???	?????	3	66,7%	15,0%	37,3%	

[Click Here To Unlock](#)

## Top 10 Strategies by Total Return

<b>TOP 10</b> by <b>TOTAL RETURN</b>	EXIT Strategy	Ticker	Company	No.	Positive Trades	Average Return	Total Return
	After 60-days	???	?????	7	57,1%	20,9%	184,0%
	After 120-days	???	?????	5	60,0%	21,9%	117,8%
	After 20-days	???	?????	9	88,9%	8,7%	101,2%
	After 60-days	???	?????	5	80,0%	14,2%	83,8%
	After 20-days	???	?????	6	66,7%	12,4%	82,1%
	After 120-days	???	?????	4	100,0%	15,8%	78,6%
	SL: -10%   TP: +20%	???	?????	3	100,0%	20,8%	76,3%
	SL: -10%   TP: +20%	???	?????	5	60,0%	14,4%	76,2%
	SL: -10%   TP: +20%	???	?????	6	66,7%	10,6%	71,7%
After 60-days	???	?????	6	66,7%	9,8%	71,4%	

[Click Here To Unlock](#)





# 7. Glossary

## **Moving Average:**

It represents the simple average of the prices of a given period. This report considers the average of the last 20 days to identify the short-term trend, 50 days for the medium-term trend, 100 days for the medium-long term trend and 200 days for the long-term trend.

## **Backtest:**

It represents a test carried out on the historical data of a company. In particular, in this report the backtest is used to understand how a company performed after it showed a certain Trading Signal / Chart Pattern. The basic principle of the backtest is that every time the trading signal / chart pattern has appeared in the past, it is as if a buy position on the stocks was opened and then closed in 4 different ways: after 20 days, after 60 days, after 120 days or using a strategy that includes a stop loss and a take profit.

## **Trading Signal / Chart Pattern:**

This report identifies the price that rises above the 20, 50, 100, or 200 day moving average.

## **ENTRY Strategy:**

It refers to the single trading signal / chart pattern used to simulate the opening of each single trades: Price crossed above 20, 50, 100 or 200-day moving average.

## **EXIT Strategy:**

It refers to the strategy used to simulate the exit / closing of each single trades: after 20, 60, 120 days or using a strategy with a stop loss and a take profit.

## **No.:**

It refers to how many trades have been made, i.e. how many times the single trading signal / chart pattern has appeared in the last 4 years.

## **Positive Trades:**

It refers to how many trades have closed positively. In the example of the "How It Works" section, Apple Inc (AAPL) stock price has crossed above the 20-day moving average 25 times and in 85% of cases the price after 20 days was higher than the initial price.

## **Average Return:**

It refers to the average return of a trades. In the example of the "How It Works" section in each of the 25 times Apple Inc (AAPL) crossed above the 20-day moving average it gained an average of 4% over the next 20 days. All data in this report refer to gross of commissions and other expenses.

## **Total Return:**

It refers to how much an initial portfolio of \$10,000 invested in each individual trades would earn in total. In the example of the "How It Works" section, if you had started with an initial capital of \$10,000 and invested every time Apple crossed above the 20-day moving average and closed the position 20 days later, you would have gained 266, 6%. All data in this report refer to gross of commissions and other expenses.

## **Stocks / Stocks Analyzed:**

Represents all the individual companies analyzed in the report.

## **Strategies / Strategies Analyzed:**

Represents all the strategies analyzed in the report. The single strategy consists of an entry and an exit strategy. For example, 4 strategies are considered if we assume to carry out a backtest with an entry strategy with the price exceeding the 20-day moving average and an exit strategy that considers all 4 periods (after 20, 60, 120 and with stop loss and take profit).

## **Trades / Trades Analyzed:**

Represents all trades analyzed in the report. If we assume that Apple in the last 4 years has exceeded the 20-day moving average 25 times, then the number of trades considered is precisely 25. The total number of trades sums up the trades of Apple and all the other companies analyzed in the report.

## **Average Top 3 Positive Trades / Average Return/ Total Return:**

The calculation starts from the percentage of trades concluded in the positive/average return per trade/total return of the best 3 strategies and makes a simple average of the values.

## **Stop Loss and Take Profit:**

In this report, the stop loss and take profit refer to the end-of-day data. So, if in a simulated trade there is a stop loss of -10% and in the middle of the day it was hitting -12% but it eventually recovers and closes the day at -8%, then the stop loss will not trigger and the trade will not be closed.

## **NO Overlapping trades:**

This concept is very important and refers to the fact that there cannot be simultaneous trades for the same strategy. For example, if the apple price rises above the 20-day average on January 10, the opening of a buy position is simulated. Now let's assume that the trade's closing strategy is 20 days after the opening, so January 30th. Now, if Apple's price goes below the 20-day average on January 13 and then goes back up again on January 15, a second purchase position on Apple will not be opened, but the original one will remain. Different speech if the apple price returns above the 20-day average on February 3, then in that case the opening of a new trades will be simulated.

The fact that each closing strategy has a different time before closing the trade means that the number of trades, with the same entry strategy, will be different for the 4 different types of exit strategies. Quite simply it is enough to take the example above, if the exit strategy had been after 60 days instead of after 20, then the fact that the price of apple had returned above the average at 20 days on February 15 would have meant that the buy position was not opened because 60 days must pass from the day of purchase to have a second trades.

Obviously these concepts do not apply to the strategy with take profit and stop loss because the opening and closing in that case depend on the achievement of a certain gain or loss and not based on time.

## **Minimum trades to enter the rankings:**

While the "All trades" sections contain the results of the backtests of all the strategies, the "Rankings" sections do not include those that have less than 3 trades made, this is necessary to only have strategies with enough data analyzed to be considered reliable.

## 8. Disclaimer

Backtested, hypothetical or simulated performance results have inherent limitations. Simulated results are achieved by the retroactive application of a backtested model itself designed with the benefit of hindsight. The backtesting of performance differs from the actual account performance because the investment strategy may be adjusted at any time, for any reason and can continue to be changed until desired or better performance results are achieved. Alternative modeling techniques or assumptions might produce significantly different results and prove to be more appropriate. Past hypothetical backtest results are neither an indicator nor a guarantee of future returns. Past performance should not be taken as an indication or guarantee of future performance, and no representation or warranty, expressed or implied is made regarding future performance.

Backtest performance results are gross and have not taken into account performance fees, setup costs, or other fees and charges.

The report is not for public distribution and has been furnished solely for information and must not be reproduced or redistributed to others. None can use the report as a base for any claim, demand or cause of action and, also none is responsible for any loss incurred based upon. The investments discussed or recommended in this report may not be suitable for all investors. Opinion expressed is the current opinion as of the date appearing on the material only. Further, the information in the document has been printed on the basis of publicly available information; internal data and other sources believed to be true and are for general guidance only but which may have not been verified independently. While every effort is made to ensure the accuracy and completeness of information contained, BullDude.com takes no responsibility and assumes no liability for any error/ omission or accuracy of the information. Recipients of this material should rely on their own judgments and conclusions from relevant sources before making any investment. The investment advice should not be considered to be or taken as an offer to sell or a solicitation to buy/sell any security. Price and value of the investments referred to in this material are subject to volatility. Past performance is not a guide for future performance.

Bulldude.com and this report contains statements and statistics that have been obtained from sources believed to be reliable but are not guaranteed as to accuracy or completeness.

YOU SHOULD NOT MAKE ANY DECISION, FINANCIAL, INVESTMENTS, TRADING OR OTHERWISE, BASED ON ANY OF THE INFORMATION PRESENTED ON OR DELIVERED BY ANY OF THE PRODUCTS, SERVICES, INTERNET WEB SITES WITHOUT UNDERTAKING INDEPENDENT DUE DILIGENCE AND CONSULTATION WITH A PROFESSIONAL BROKER OR COMPETENT FINANCIAL ADVISOR.

Decisions to buy, sell, hold or trade in securities, commodities, cryptocurrencies and other investments involve risk and are best made based on the advice of qualified financial professionals. Any trading in securities or cryptocurrencies or other investments involves a risk of substantial losses. Under no circumstances shall we be liable for any loss or damage you or anyone else incurs as a result of any trading or investment activity that you or anyone else engages in based on any information or material you receive through Bulldude.com or our Services.